

WMicrotracker

Using software step by step

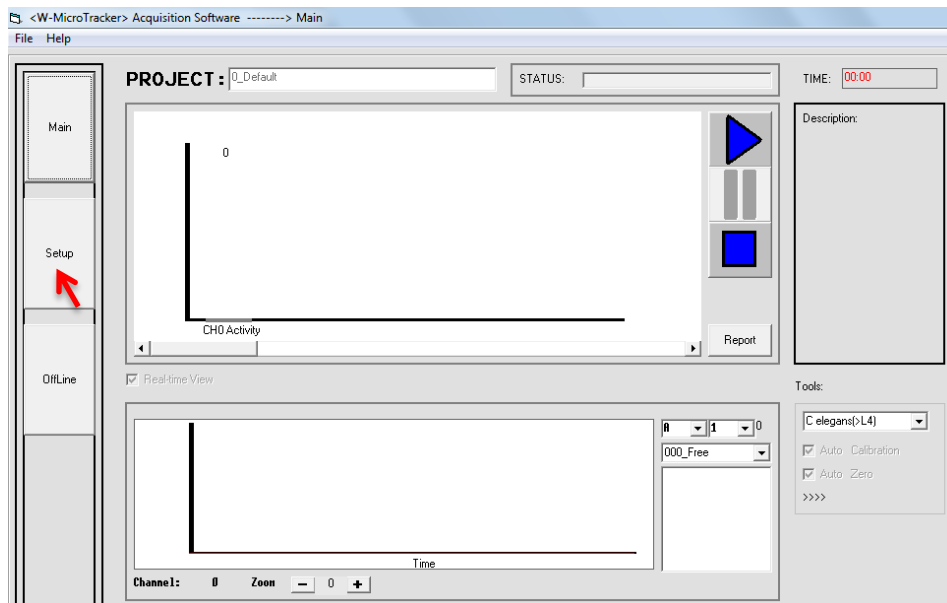
- I) Create a New project
- II) Acquiring data
- III) Managing offline data

I. CREATING AND CONFIGURING A NEW PROJECT:

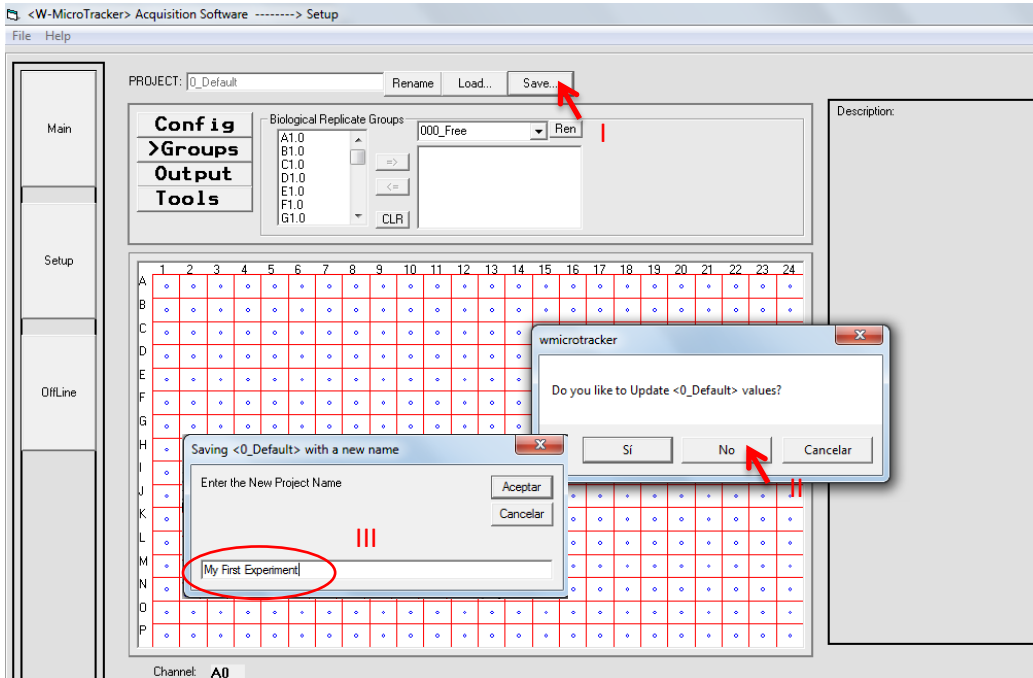
- 1) Open WMicrotracker Software (Execute wmicrotracker.exe or a shortcut to this file)



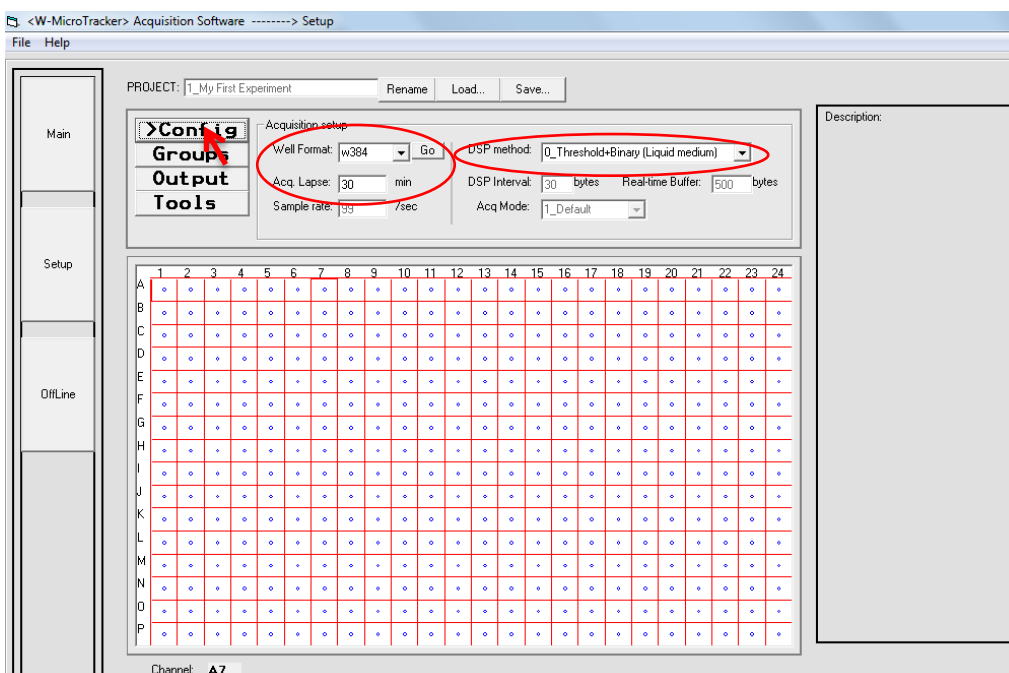
- 2) The Main window appears. Go to Setup Window to configure experimental setup.



- 3) In the Setup Window, Create a New project:
 - a. Select Save
 - b. Select “not to update” current project.
 - c. Write the new project name



- 4) In the Setup Window, Configure experimental parameters:
 - a. Time lapse to acquire (Default=30min)
 - b. DSP method (Digital signal processing method):
 - i. 0= Best for liquid culture of worms
 - ii. 1= Best for agar culture of worms
 - c. Microplate format. Select microplate format and click “Go”

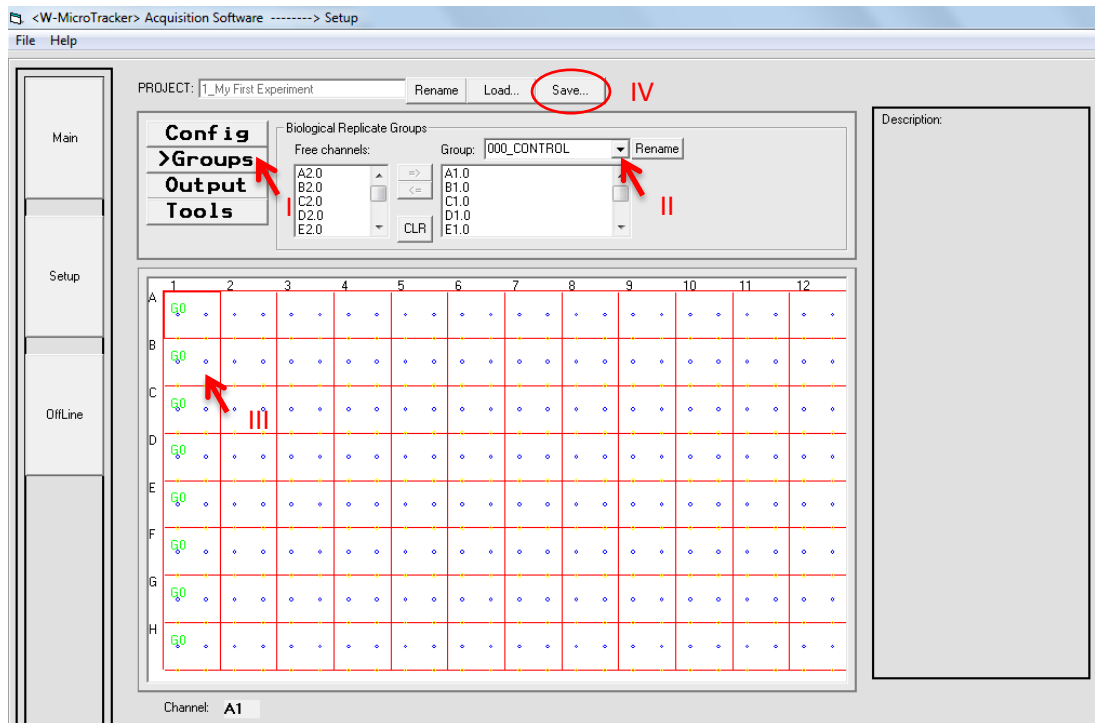


5) Check correct Acrylic Adapter for Microplates:

Microplate to use	Configuration file	Acrylic adapter	microbeams/well
384 wells microplate	W384	W384	1
96well microplate "flat" bottom	W96f	W96 "F"	2
	W96_flat*	W384	4
96well microplate "U" bottom	W96u	W96 "U" (or W96 in old versions)	1
24well microplate "flat" bottom	W24	W384/W24	4

*Discontinued for incompatibilities with some microplate trades.

- 6) In Setup Window, mark experimental groups (technical replicates)
 - a. Select Group Name
 - b. Navigate on microplate plot and Click on wells to assign to that group:
 - i. Left click to Select
 - ii. Right Click to unselect



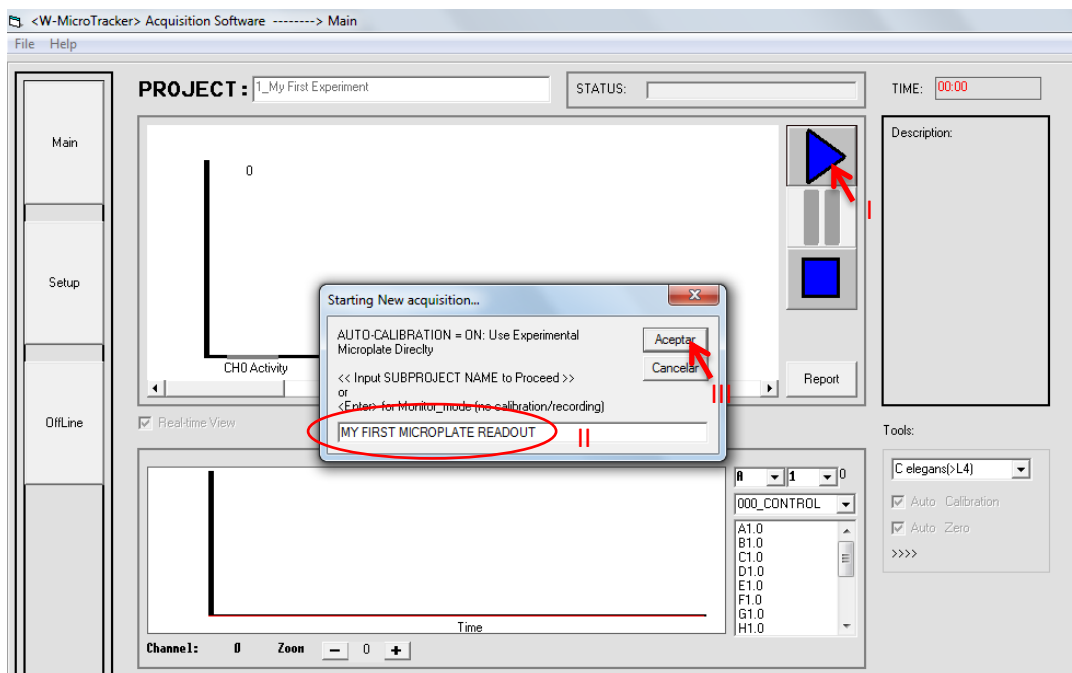
7) Click Save and say "yes" to upload changes in current Project.

II. RUNNING THE EXPERIMENT

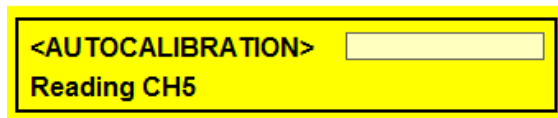
- 1) Open WMicrotracker Software, configure project and go to Main Window
- 2) Insert Microplate with animals into WMicrotracker system



- 3) Click "Play", and write the sub-project name



- 4) Click "Accept". When you write a subproject name, the equipment starts the acquisition procedure:
 - a. Autocalibration process



<AUTOCALIBRATION>
Calibrating... [383]

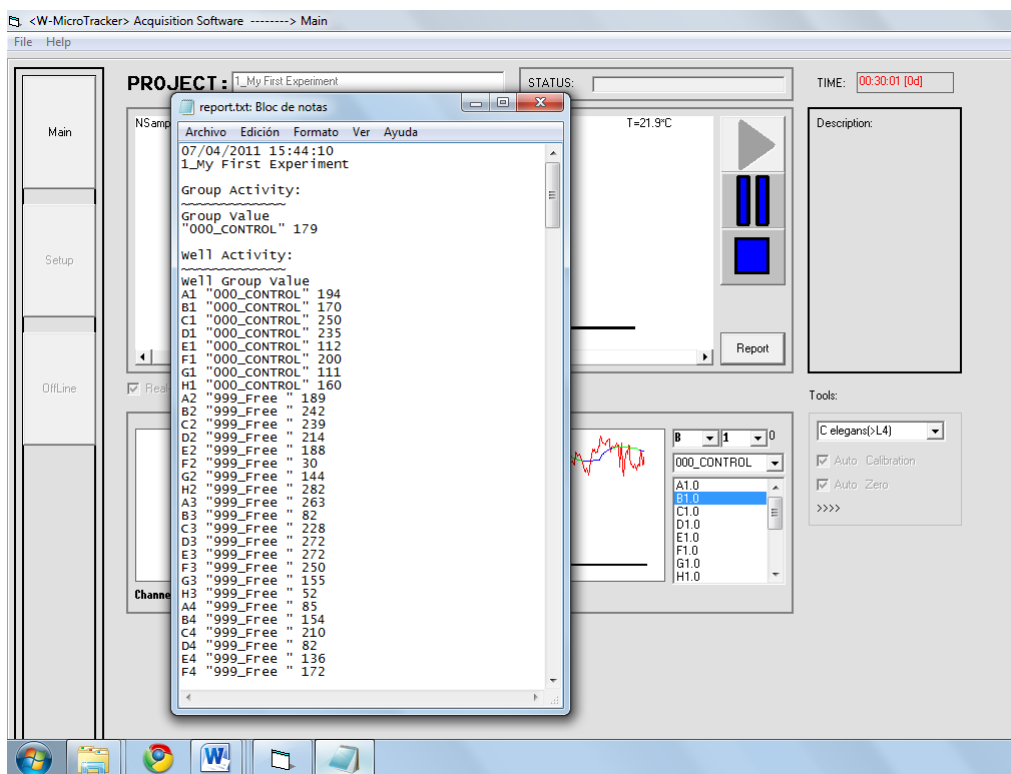
b. Autozero process

<AUTOCALIBRATION>
AutoZero... <10>

c. Acquisition



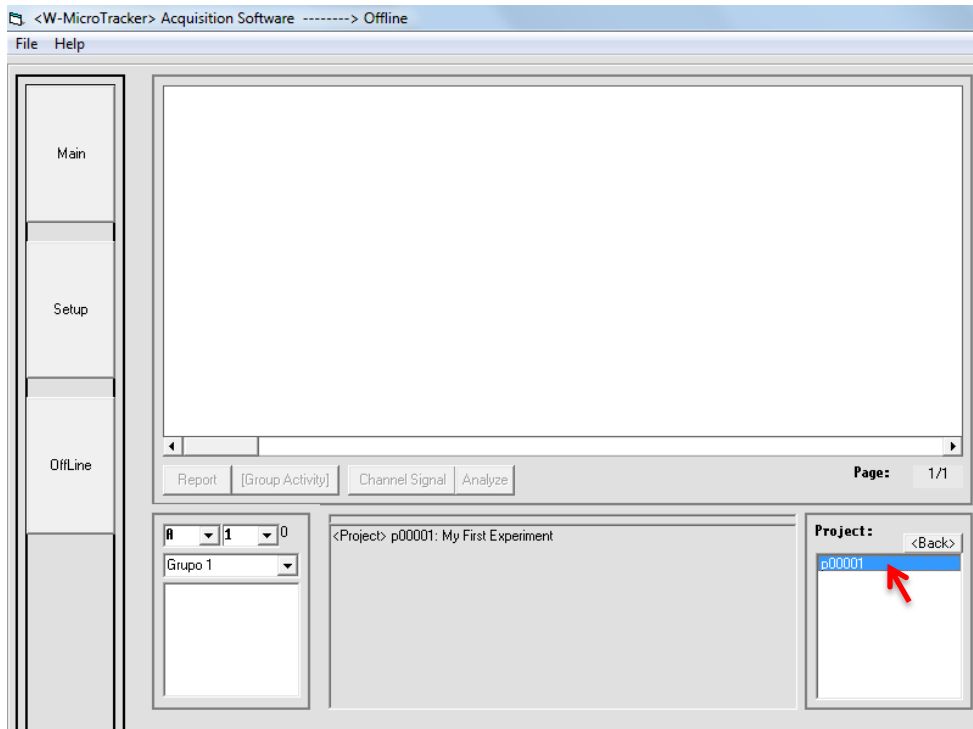
5) When Acquisition lapse finish, a text report is generated.



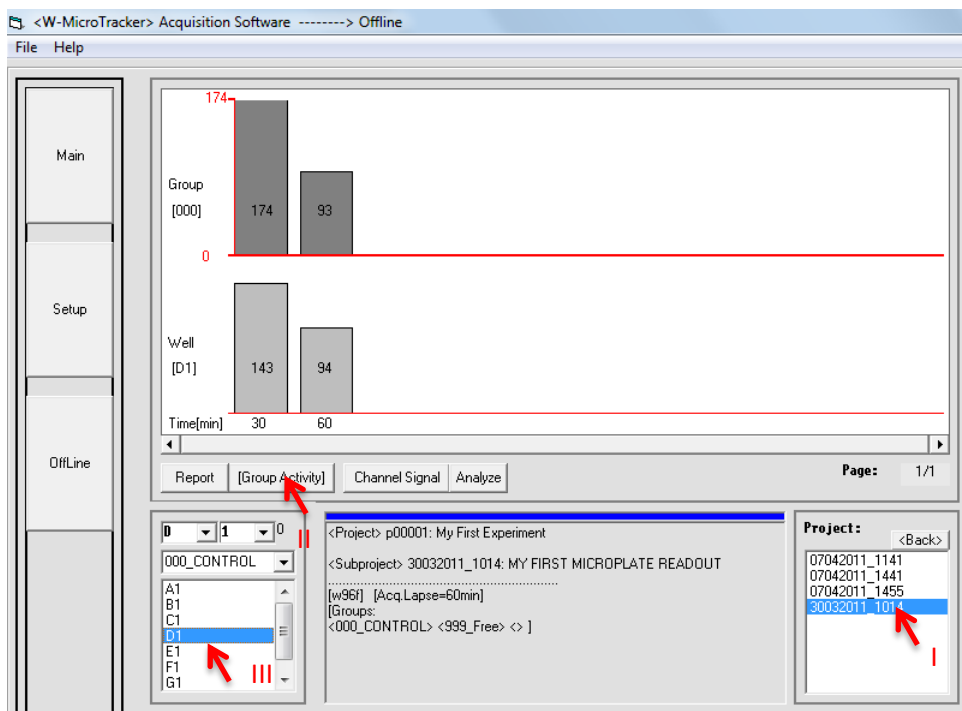
6) Click Stop to enable command buttons.

III. OFFLINE DATA ANALYSIS

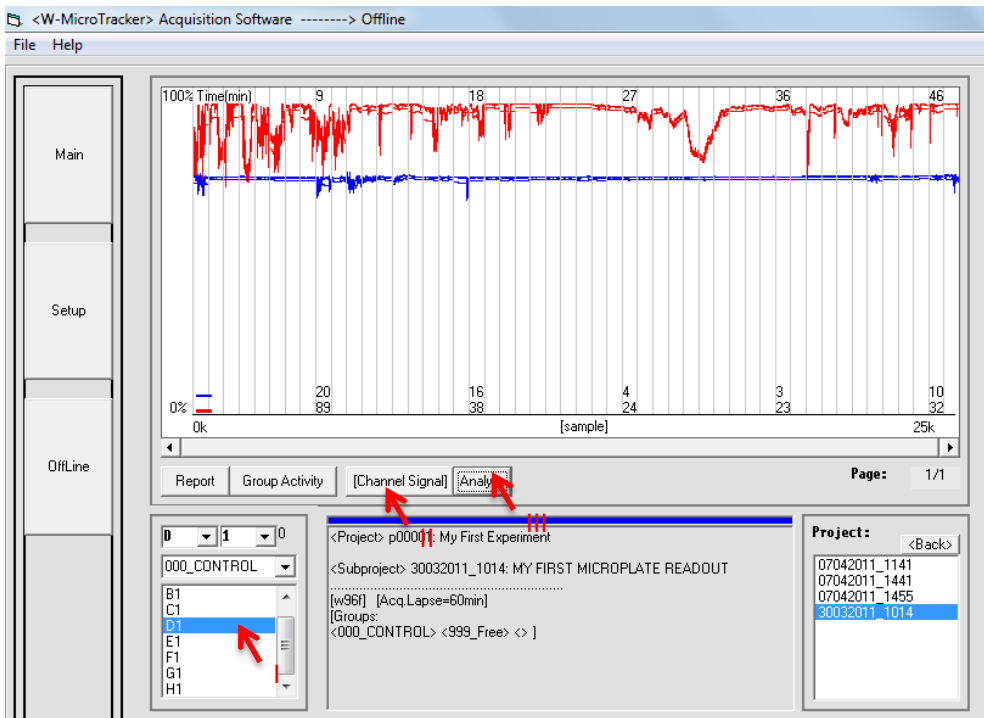
- 1) Go to "offline" Window to analyze the saved experiment:
 - a. Select project number



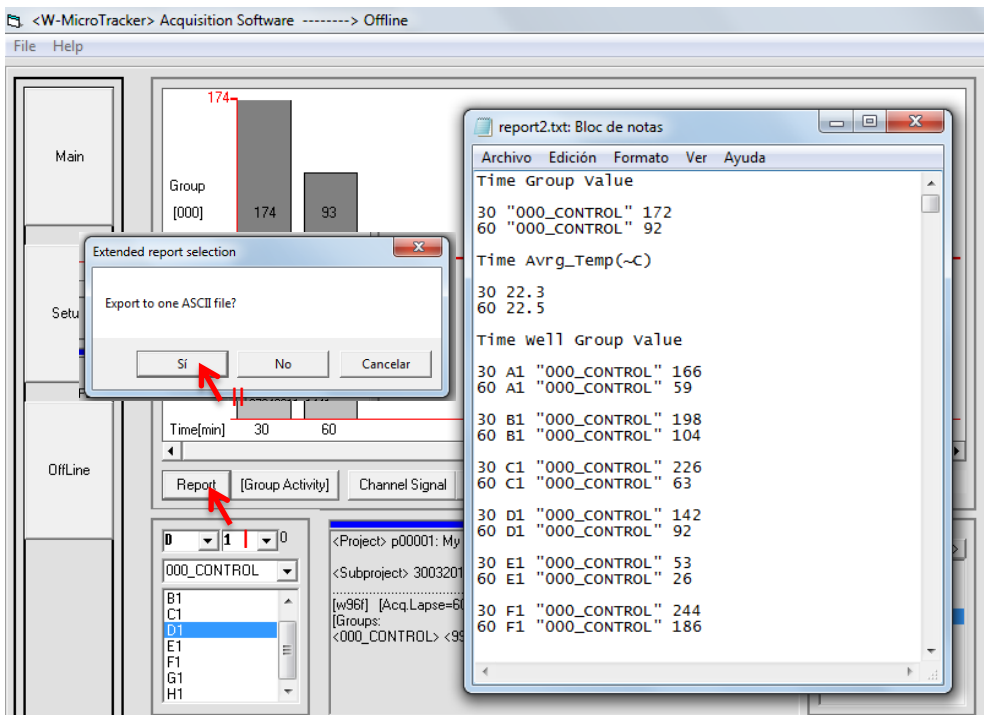
- b. Select subproject number and Double-Click the selected. Plot Group Activity



c. Plot Channel signal (Raw) Activity



d. Generate offline text Report. Data is exported in 30 minutes blocks, and temperature data is also exported.



2) Import text file from MSEXcel:

- a. Select open file: Report2.txt
- b. Select the following data importing characteristics:
 - i. "delimited" data
 - ii. row separator: "space"